

## Welcome!

June 12<sup>th</sup> Consortium Meeting

## Agenda

Desired Outcomes:

- Learn how we are using your May 8th comments to improve the plan
- Review the Policy Tool Kit that has been developed by University staff and students
- Identify potential regional theme champions and resource people and organizations and indicate how you would like to be involved in implementation
- Be informed about the August 14th Celebration event

Welcome

Overview of this afternoons work

The Policy Tool Kit introduction and overview

Champions and resources identification activity

Next steps, August 14th Celebration event, 4-6 at The Lodge

Complete Evaluation Forms

Adjourn

## R5DC Resilient Region Plan

Is a  
Community Driven  
University Assisted  
Partnership

Pursuing E<sup>2</sup>  
Economic and Environmental Vitality

## What we will do today

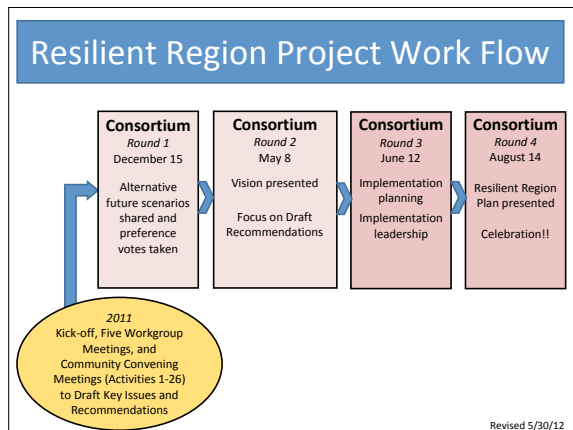
- Update on work from May 8<sup>th</sup>
- Introduce the Policy Toolkit
- Nominate “Champions” and Resources.
- Learn about next steps

## What Guides our work?

- Our Mission
- Livability Principles
- Regional Guiding Principles
- HUD Mandatory Outcomes

## Mission

To create a community-driven, university-assisted partnership around planning sustainable regions that will integrate the disciplines of Housing, Transportation, Natural Environment (Land Use) and Economic Development with viable strategies through HIGHLY involved civic engagement....



## Update on work from May 8<sup>th</sup>

### Table Harvests

See copies on your tables for examples of the Input that was given in each area

### Individual Worksheets.

Team members are going through them in detail and utilizing the comments to improve the plan. You will see the results on August 14<sup>th</sup>.

## Natural Resources, Recommendation 3

Comments showed us that the way it was written, “Provide better access to public waters”, caused people to think that it’s intention was to increase the number of public boat accesses.

**Actually the intention was to increase the number of public swimming beaches.**

**The edits will clarify this.**


## Policy Toolkit



Tools to help communities implement the Resilient Region plan

Drafts posted on Basecamp

## Tools Included



- Sustainable development best practices
- Model comprehensive plan language
- Model zoning ordinance language
- Affordable housing needs/location model

## Developed By

- UM Humphrey School of Public Affairs Capstone Class
- UM Law School Sustainability Clinic
- William Mitchell College of Law Community Development Clinic



## Best Practices

Target audience – communities, business, individuals, advocacy organizations

- Economic Development
- Transportation
- Housing
- Land Use and Natural Resources



## Model Comp Plan and Zoning Ordinances

Target audience – local governments

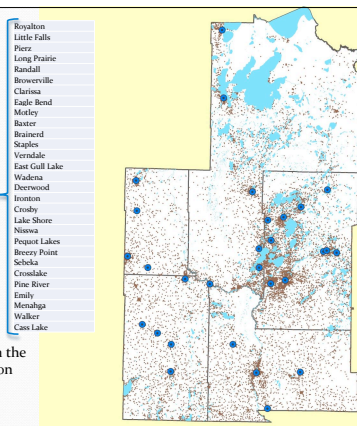
- Model comprehensive plan language
- Model zoning ordinance language

## Affordable Housing Location/ Allocation Model

- Informs the regional Fair Housing Equity Analysis
- Geographic Information Systems model
- Analysis is based on:
  - population
  - affordable housing need
  - location of jobs
  - commuting distance
- The model seeks to answer the question: “**how many affordable housing units should be created where?**”

Focus of the analysis: municipalities with **population greater than 500**

Total: 29 cities  
(out of 68)

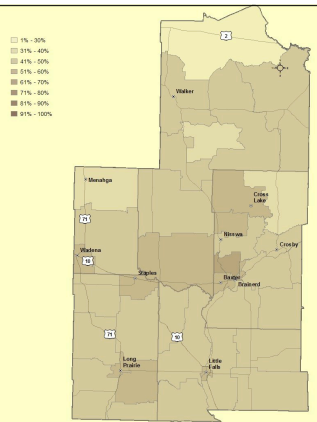


Map: selected municipalities on the background of overall population distribution (Each brown dot represents 10 people). (data: redistricting 2010)

## Affordable housing need by census tract

Darker color indicates greater need

(MN Housing, 2011 data)

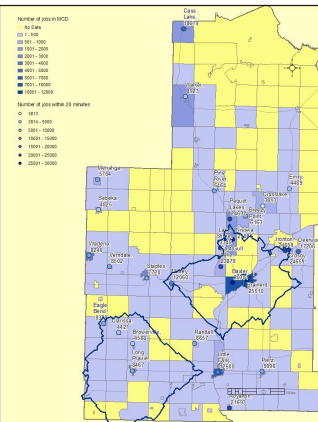


## Location of jobs and commuting distance

Outline illustrates 20 minute drive areas from Baxter and Long Prairie.

Minor Civil Divisions are shaded according to the number of jobs within each.

Communities (dots) are shaded according to the number of jobs reachable with a 20 minute commute





### Example Results

Municipality	Number of Affordable Housing Units Needed for Households at 30% of Area Median Income
Brainerd	1438
Baxter	1033
Little Falls	363
Royalton	140
Long Prairie	111
Staples	38
Cass Lake	32
Walker	0 (All of the 25 units needed already exist)
Wadena	-23 (More affordable units exist than are needed)

- ### On-line Discussion of Toolkit
- Posted on InCommons Website
  - [www.incommons.org](http://www.incommons.org)
  - Several on-line conversations
  - Land Use and Natural Resources
  - Transportation
  - Housing
  - Economic Development
  - You will receive e-mail notice of dates

- ### Nominating Champions
1. Review job descriptions
  2. Gather at your favorite Theme
  3. Nominate Champions
  4. Nominate Resources
  5. Rotate to a total of four themes

- ### Eleven Themes
1. Affordable Housing
  2. Housing
  3. Changing Populations
  4. Connectivity
  5. Education & Workforce
  6. Energy
  7. Health Care
  8. Natural Resources & Development Patterns
  9. Tighter Resources
  10. Transportation
  11. Economic Engines

- ### What's Next?
- On **August 14<sup>th</sup>** we will present the final plan, celebrate success, and move forward with implementation
- Please complete your evaluations and hand in your worksheets

## Thank You!

Serving Crow Wing, Cass, Morrison, Todd and Wadena Counties